



CONNECT. COLLABORATE.
Educate Globally.



Delphenius





CROWNE PLAZA

KANSAS CITY
DOWNTOWN

POLICY ⑨
District/school
residency (host sibling)

~~Deadlines (district/school)~~

~~Number of students
allowed
per school - per organization~~

~~SLEP min. scores~~
(schools get \$\$ for stus)

POLICY

* ~~ENROLLMENT DATE
LIMITATIONS~~

* ~~LIMIT TO NUMBER
OF STUDENTS/SCHOOL~~

* ~~APPROVAL PROCEDURES~~
SLEP * BIDS * AGE DM
• • • • •
• • • • •
• • • • •
②

Policy
Placement teacher
Language Proficiency scores
Admin approval
No sibling stus
Limited number of placements

* Placement
③





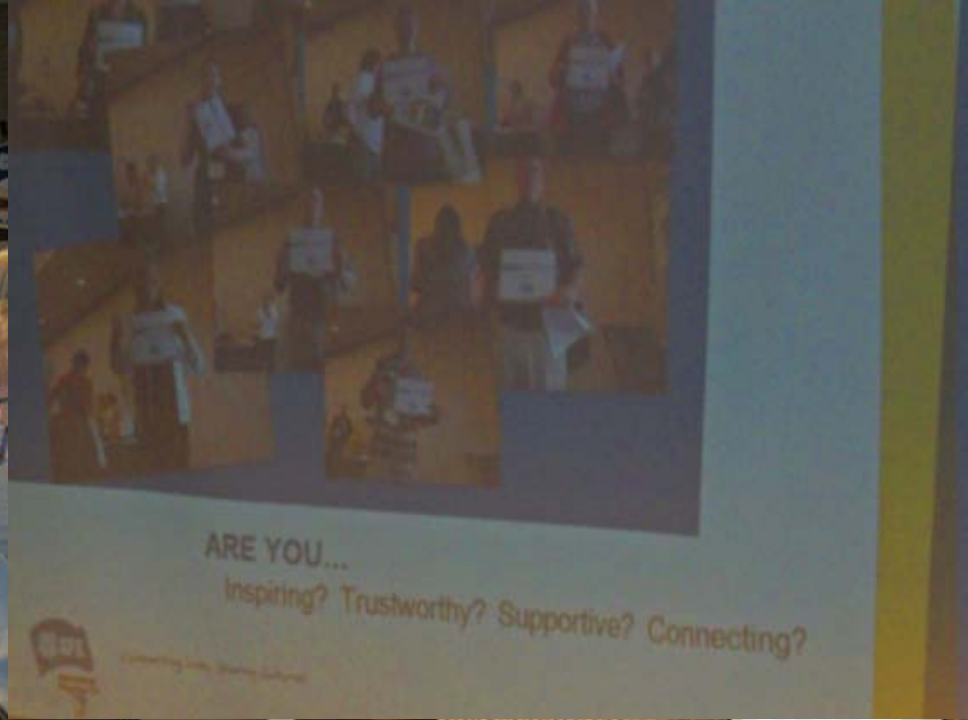


TICKET
KEEP THIS COUPON

TICKET
KEEP THIS COUPON

TICKET
KEEP THIS COUPON





What can we offer
to schools through clubs?

What does AFS
get from clubs?



Taking it Home



Now What?

