

## Editorial

*This questionnaire was interesting, I'm glad I took part in the Kaleidoscope program, it made me think about my life here now and I agree with all the things that I've picked in the questionnaire... But its good to be aware of these things and keep them in mind for the rest of the year.*

This is just one of the many comments made by AFS participants while completing their questionnaire. Participants from SH YP2010 have now been in their host country for several weeks and they have told us about their cultural experiences through the Kaleidoscope surveys. AFS-ers from all over the world have been telling us how well they are adapting to the new way of life in their host country. They have been telling us about their friendships with people from their host country, as well as with other people from their home country and other nationalities. Also, participants have been sharing their perceptions about different cultures and telling us about their ability in the host language. We are very pleased that a great **many participants have been sharing their views and opinions about their exchange**, as well as a number of very positive comments on the Kaleidoscope project! A flavour of these quotes is provided further in this newsletter.



At the same time, we have now also launched the NH part of the project. This is an especially exciting phase of the project for a number of reasons. Obviously, the NH cycle boasts much greater sending numbers across the network. Further, we are looking forward to working with those partners who only send on the NH cycle. Thus far, numbers for NH participation in the Kaleidoscope Project are looking good (see 'Status update: NH participation'). **Strong participation is really important.** High participation rates will ensure coverage of a wide range of experiences. But what makes this project really unique and exciting is the number of countries that are represented in this project, both as sending or hosting countries. This allows us to examine both the global and the country specific level. It also means that the findings of our study will be particularly meaningful for all participating partners.

While participation rates for NH participants is promising, we really hope that these numbers will increase further during the next few days and weeks. **It is not too late for NH participants to join the Kaleidoscope project.** There is still time to promote the project to new or current applicants who haven't had the chance to express their interest in the project just yet. Further in this newsletter we explain how **you can help the project**, by ensuring a full transfer of your NH participants (see 'It's not too late to participate!').

As researchers in the Kaleidoscope project, we are really very excited about the project. The project is truly unique in its scope and diversity. The responses and comments from participants so far are encouraging. We are convinced that there will be so many things to learn from the findings of the Kaleidoscope project. We hope you share our enthusiasm about the project, and that you can help us to make this a success.

Kali

## How are SH participants getting along?

At the end of each questionnaire, participants are able to leave personal comments. Many participants have been doing so and these include some really positive comments about the project:

*Thanks for the opportunity of sharing our experiences!!*

*I found this question quite good for me to let myself reflect what had I done in my exchange year ...thanks a lot*

*Acho que o questionário está cada vez mais interessante, e afunilando nas questões e situações que passaremos no intercambio, estou realmente gostando de faze-lo*

*The questionnaire was interesting, it made me think about a few things :) I'm looking forward to completing the next one!*

## Status update: NH participation

A very big thank you to all partners who have been updating their applicant records in Global Link to reflect the permission criteria for this study! Numbers for NH participation have been steadily increasing over the past weeks and continue to rise gradually from day to day. The figures in the table below reflect (as a percentage) how many NH applicants have been transferred to our Essex database, per sending country. These applicants will be invited to take part in the project and hopefully many will chose to follow it all the way through. The percentages in the table are derived from the number of transferred participants as a percentage of *estimated* NH sending numbers. The colour coding represents 3 levels of percentage transferred. Red figures range between **0% - 40%**, orange figures from **40% - 75%** and green from **75% - 100%**. Thanks to the commitment and support of sending partners, approximately **60%** of the total estimated sending numbers for NH have been transferred so far! Many partners are still processing more applicants and a number of countries have told us that we can expect 'opt-out' rates to be low. Such partner feedback suggests that the overall number transferred could rise to over 75%!

Country	%
ARG	0%
AUS	0%
AUT	70%
BFL*	31%
BFR	24%
BOL	45%
BRA	39%
CAN	0%
CHI	14%
CHN	98%
COL	19%
CRC	70%

Country	%
CZE	81%
DEN	44%
DOM	2%
ECU	0%
EGY	0%
ESP	92%
FIN	60%
FRA	91%
GER	31%
GHA	100%
GUA	80%
HKG	81%

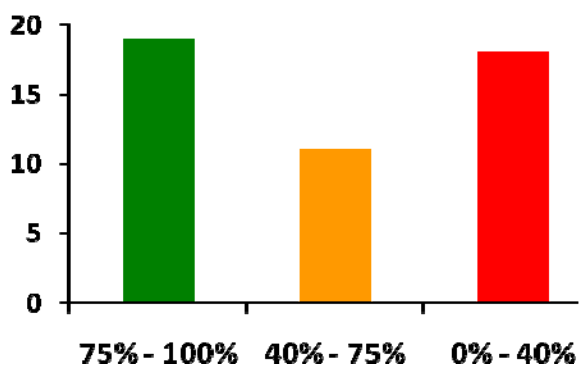
Country	%
HON	88%
HUN	72%
INA	0%
IND	100%
ISL	5%
ITA	86%
JPN	68%
MAS	0%
MEX	83%
NED	20%
NOR	79%
NZL	98%

Country	%
PAN	64%
PAR	90%
PER	80%
PHI	100%
POR	65%
RUS	93%
SUI	68%
SWE	2%
THA	60%
TUR	85%
USA	94%
VEN	16%

Table: % of NH participants transferred per country (updated on 20th May)

\*due to technical issues numbers are still to increase

The graph below shows how many partners fall within each of the three transfer ranges. Countries like CHN, CZE, ESP, FRA, GHA, GUA, HKG, HON, IND, ITA, MEX, NOR, NZL, PAR, PER, PHI, RUS, TUR and USA have already transferred really high percentages. Others such as AUT, CRC, and HUN are not far behind. Over the days and weeks to come, as applications become finalised, guaranteed and updated in Global Link, we would love to see the number of partners within the green range (75% - 100%) to increase further!



Graph: Number of partners within each transfer range

Every partner can play a truly meaningful part in this project, and every single participant counts. It really is easy to get involved and to prepare your applicant records for transfer to the project database. So, see the section '**It's not too late to participate**' to see how you can join us!

## SH participants further comments

It has also been a pleasure to read what participants are thinking, feeling and experiencing about their host country:

*I expect a great many challenges, but out of them i expect experience and memories that will last a life time.*

*It has been amazingly interesting experience so far. The way of thinking of myself and my own self-consciousness has taken a leap forward. I've built perspective to the world and people around me. I feel that the best experiences are the hard ones. Those are the ones that I've learned the most from.*

*Muchas cosas son muy diferentes, pero eso no significa que no me guste. Hay muchas cosas que estoy aprendiendo que me gustaria seguir haciendolas cuando llegue de vuelta a Costa Rica.*

*Très excitée et heureuse à l'idée de partir dans un mois, mais aussi anxieuse ! C'est un rêve qui va se réaliser.*

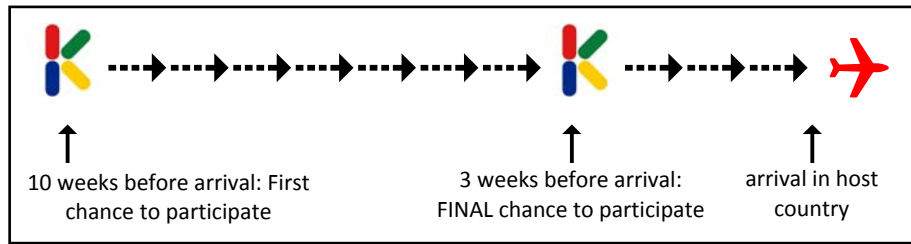
*Everyone in Japan is so nice and polite. It reminds me of Canadians. I miss everyone at home, but I haven't thought about leaving Japan.*

*Es war ich denke die beste Entscheidung in meinem Leben hier her zu kommen. Es ist nicht immer einfach und gerade am Anfang war es richtig hart. Aber jetzt nach 2 Monaten kann ich es endlich richtig geniessen! Ich bin so gluecklich hier zu sein*


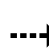
*I am having lots of fun most days. :) But I have found that I feel great one day, things don't seem so bad, and the next I feel really frustrated at how I don't seem to be picking up the language as easily as I thought it would be... I feel quite out of place here and I don't have many of my familiar comforts from home which I think makes it harder... I am trying to stay positive though, and I am sure that things will rapidly get better in the next couple of months... :)*

## It's not too late to participate!

It is really simple to get your sending students involved in this project and there is still time! Invitations to join the project can be sent out by the Kaleidoscope team at any time between 10 and 3 weeks before arrival (see diagram).



**Diagram:** Timeline showing when NH participants can be invited to join the project.

 = participant invited to join the project     = 1 unit is 1 week

In the time between being invited to the project and arrival, participants are introduced to the key elements of the project, encouraged to engage non-AFS friends and are invited to complete 2 online questionnaires. So, the sooner participants are invited the more time they have for completing the questionnaires and inviting friends.

NH arrival dates mostly fall during the months of July and August so there is still plenty of time to follow these three simple steps to get your students involved in this exciting worldwide project!

Promote the project

Gain consent/authorisation

Process in Global Link

### Promote the project

First of all, now is really a key time to promote the project to current or new applicants who haven't yet been able to express their interest in the project. We have created some really fun promotional material for this purpose. The Kaleidoscope website, is an interactive summary of the project. We have also made a short video about the project, which includes a feature by Tachi Casal.

[www.kaleidoproject.org](http://www.kaleidoproject.org)



[www.kaleidoproject.org/video](http://www.kaleidoproject.org/video)



### Consent /authorisation

Secondly, your applicants must be informed about the project before we contact them. The new Form #6 contains a short description of the project, giving applicants the opportunity to 'opt-out' if they are not interested. All applicants who do not 'opt-out' via form #6 can be invited to join the project by us! In order for us to invite them we need to know who these people are and have some information about them.

### Process in Global link

Finally, the transfer of information from Global Link to our project database is simple. All you need to do as a partner in this project is to check that the following three criteria apply in Global Link for applicants not 'opting-out' of the project:

1. applicant is in preparation stage
2. FullApp completed
3. World Study Permission field is checked

Then, via an automatic daily transfer, this information will be sent to our project database. This transfer includes information about new eligible participants as well as updated information about already transferred participants (e.g. if travel dates change).

If the FullApp complete field is not a regular part of your process, this can be solved by a) setting this to complete when processing new applications and b) changing this field for existing applications. Alternatively, you can contact Fabricia Manoel ([Fabricia.Manoel@afs.org](mailto:Fabricia.Manoel@afs.org)) who will be able to update this field via a batch process.